



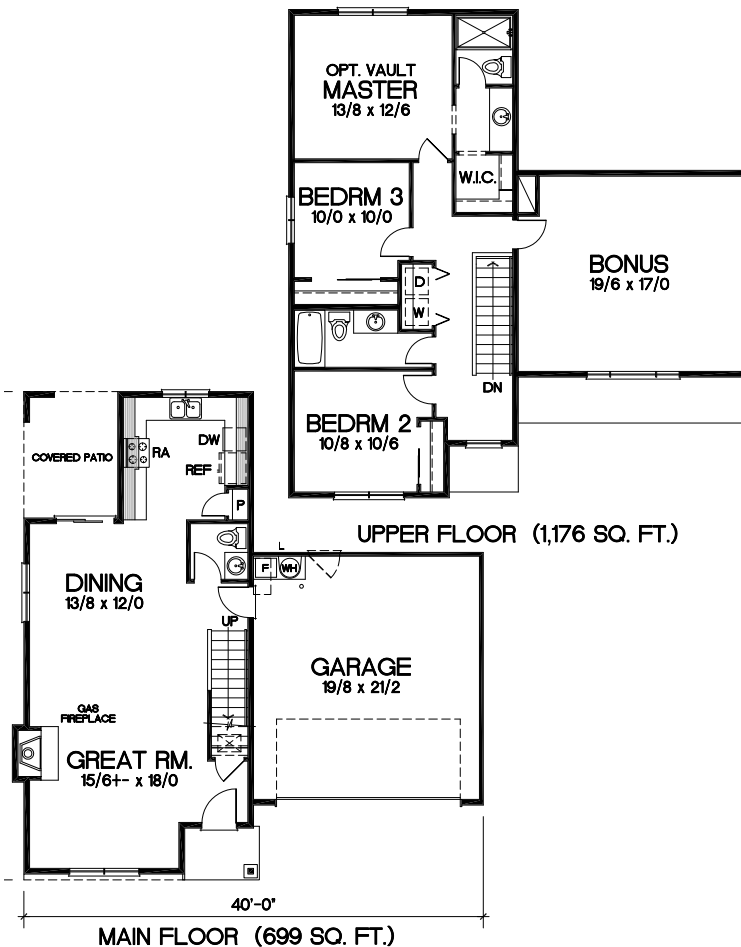
# FAMILY HOME WITH BIG YARD FOR SALE

Village Pointe



- 3 Bedroom
- 2.5 Bath
- Two story
- Huge 9,408 sf corner lot
- Close to schools, parks & shopping
- 1,875 sq. ft.
- Lot #115
- Address: 3167 SW Black Butte Ln. Redmond, OR 97756
- Price: \$159,950

- Family home with large bonus room
- Gas fireplace
- Forced air heat
- Large walk-in closet in master
- Tile backsplash
- Black appliances
- BIG yard
- Stone accents on front exterior
- Priced to sell!



## ABOUT ANTHEM HOMES LLC

Steve Brown and Tim Roth founded Anthem Homes, LLC in an effort to combine their forty years of experience to construct new homes for the quality conscience buyer.

Both Steve and Tim started their construction careers in the trenches by working directly with several of the trades that are required to build new homes. They have learned what it takes to do what is right to assure the highest level of quality that a new homeowner has come to expect.

Each has served their local Home Builder's Association for a number of years to gain additional knowledge of what it takes to be active in the industry and to contribute to their local communities. Through these efforts they have gained leadership skills that have earned the respect of the professional trades people.

It's with the combined efforts of both Steve and Tim that Anthem Homes, LLC has established itself, basing its principles on hard work and dedication to building quality housing. The key to success in the home building industry is customer satisfaction, which requires good communication.

## Directions:

From Hwy 97, take Hwy.126 exit (Highland Avenue) heading west. Turn right at Rimrock Way and turn left on Antler Avenue. Turn left on SW 31st Street and turn right on SW Antler Lane.

For information, call Erin Campbell, 541.410.0872

Marketed by:  
Taft Dire LLC  
628 NW York Drive, Ste. 200  
Bend, Oregon 97701  
www.taftdire.com  
All brokers are licensed in Oregon

